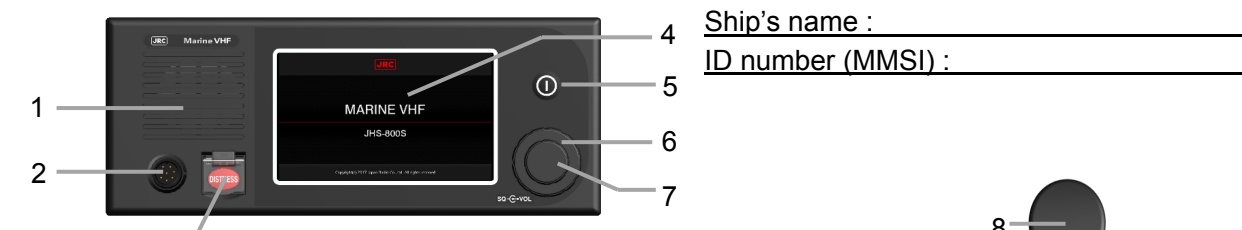


Menu tree

Menu	Submenu 1	Submenu 2	Print func	Description
CALL				DSC non-distress call
RELAY				DSC drobose call
DIST-E				Editing distress message
DSC LOGS	RX DIST		✓	Received distress call log
	RX OTHERS		✓	Received non-distress call log
	TX CALLS		✓	Transmitted call log
AIS INFO	SHIPS LIST		✓	Other ships list
	PROX CHECK			Registered ships notice
VOICE FUNC	PLAY-BACK			Playback received voice msg
	PUBLIC ADDR			PA using external loudspeaker
	INTCOM			Starting intercom
CH OPE	SCAN	ALL CH		All channel scan
		MEMORY CH		Memory channel scan
		SELECT CH		Selected channel scan
	DUAL WATCH			Watching CH16 & 1 channel
	TRIPLE WATCH			Watching CH16 & 2 channels
	MEMORY CH	CH LIST	✓	Setting CH from memory CH list
		CH EDIT		Editing memory CH list
	PRIV CH		✓	Private channel
	WX CH		✓	Weather channel
	REGION	ITU		ITU channel mode
		USA		USA channel mode
		CAN		Canada channel mode
		IWW		Inland waterway mode
	CH SQL SET			Preset squelch setting
	BCF START			Block channel function for river
MAINT	ALERT LIST	ALERT HIST	✓	Alert information
	SYSTEM INFO		✓	System information
	S/W VER		✓	Software version
	DSC AF CHECK			DSC signal inspection
	CERT MARK			Displaying certification mark
SELF DIAG	TRX		✓	RF CKT self diagnosis
	OWN CTRL		✓	Control CKT self diagnosis
	DSC LOOP		✓	DSC loop self diagnosis
	TRX LOG		✓	RF CKT self diagnosis log
	CTRL LOG		✓	Control CKT self diagnosis log
TEST CALL				DSC safety test call
SETUP	DATE&TIME			Setting date and time
	POS SET	POS/TIME		Setting position, time and indicator
		POS SOURCE		Setting priority for position source
	DISP SET	LCD ADJ		LCD adjustment
		SOUND		Setting related to sound
		KEY ASSIGN		Programmable key assignment
		UNIT NAME		Unit name registration
		MENU SHTDN		Setting menu shutdown timer
		HANDSET		Setting hook and sidetone
		CH AREA		10-key assignment on CH area
		S METER		Setting RF strength meter use
		CTLR START	✓	PWR ON mode (controller only)
	BT SET	BT FUNC		Setting Bluetooth use
		BT PAIR	✓	Pairing Bluetooth SPMIC
	ADDR LIST	COAST	✓	Coast station list registration
		SHIP	✓	Ship station list registration
		GROUP	✓	Calling group list registration
		PSTN	✓	PSTN number list registration
	DSC OPE	AUTO ACK	✓	Automatic acknowledgement
		RX SOUND	✓	Safety/Routine alert sound
		MDCL USE	✓	Medical use for urgency call
		NEUT USE	✓	Neutral use for urgency call
		EXP MMSI	✓	Expanded MMSI
		GROUP ID	✓	Own ship's registration
		INACTV T/O	✓	Inactivity timer set
		AUTO CH CHG		Automatic channel change
	AIS FUNC			Setting AIS use
	PRN PROP		✓	Printer property set
	BLOCK CH		✓	Waypoints registration
CODE INPUT				(for maintenance)

JHS-800S

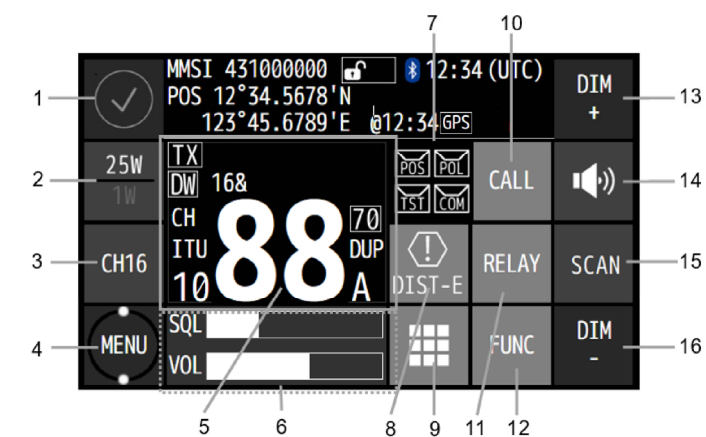
MARINE VHF RADIOTELEPHONE



- 1. Internal loudspeaker**
- 2. Handset connector**
- 3. DISTRESS button**
When in distress, sends a DSC distress alert by pressing for 3 seconds.
- 4. Color LCD/ touch panel**
Use buttons on the touch panel for operation.
- 5. PWR button**
To turn on the power, press for one second. And to turn off the power, after pressing this button, follow the dialogue on the popup screen.
- 6. Squelch control**
Adjusts squelch level.
- 7. Volume control**
Adjusts internal loudspeaker volume.
- 8. Handset**
When using in radiotelephone mode, press and hold the PTT key to talk.
- 9. Cradle**

Ship's name : _____
ID number (MMSI) : _____

Displays and buttons



- Displays the alert information screen.
- Switches transmitting power between 25 W and 1 W.
- Sets the radiotelephone to the priority channel.
- Displays the hierarchal menus screens.
- Displays TX/RX information such as channels.
- Indicates squelch and volume control position.
- Indicates the DSC automatic ACK setting. Additionally, CALL LIST button is appeared if some calls are ongoing, and restarting the call is available after touching the button and selecting that call from the ongoing call list.
- Displays a menu to edit the distress alert messages.
- Displays the numeric keypad (10-key) to set channels.
- Displays the DSC non-distress call menu.
- Displays the DSC distress relay call menu.
- Displays the various function keys.
- Increases the dimming level in 15 steps.
- Turns on or off the internal loudspeaker.
- Programmable key. Register a frequently using assignable menu or a special function.
- Decreases the dimming level in 15 steps.

1. Calling and communicating with the radiotelephone

Before operating below, previously adjust the squelch and volume controls to adequate positions.

Making a radiotelephone call

1. Select CH16 or another agreed channel.
2. Lift the handset from the cradle, then press the PTT key and make a call as described below.
 - (1) Say the calling station name ... Repeat 3 times.
 - (2) "this is"
 - (3) Say own ship's name ... Repeat 3 times.
 - (4) "over"
3. Release the PTT key to listen.
4. When answered and agree on a working channel, change to that channel.
5. After checking that no station uses the working channel, begin conversation.
6. When terminating communications, say "out".

Receiving a call on CH16

1. Lift the handset from the cradle, then press the PTT key and respond to the call as described below.
 - (1) Say the caller station name.
 - (2) "this is"
 - (3) Say own ship's name.
 - (4) "channel"
 - (5) Working channel number
 - (6) "over"
2. Release the PTT key, wait a moment, and then switch to the proposed working channel.
3. After checking that no station uses the working channel, begin conversation.
4. When terminating communications, say "out".

2. Using the feature of the radiotelephone

- 1) Dual watch : [MENU] → [CH OPE] → [DUAL WATCH] → [EXE]
(Note: Previously set a channel other than CH16.)
- 2) Triple watch : [MENU] → [CH OPE] → [TRIPLE WATCH] → [EXE]
(Note: Previously set two channels other than CH16.)
- 3) All CH scan : [MENU] → [CH OPE] → [SCAN] → [ALL CH]
- 4) Memory CH scan : [MENU] → [CH OPE] → [SCAN] → [MEMORY CH]
- 5) Select CH scan : [MENU] → [CH OPE] → [SCAN] → [SELECT CH]
→ Enter the channel range (from/To) → [EXE]
- 6) Setting a memory channel : [MENU] → [CH OPE] → [MEMORY CH] → [CH EDIT]
→ Select the CH type and enter two digits of the memory channel.
- 7) Setting a private channel : [MENU] → [CH OPE] → [PRIV CH] → Select the private channel.
- 8) Setting a weather channel : [MENU] → [CH OPE] → [WX CH] → Select the weather channel.
- 9) Changing a channel region : [MENU] → [CH OPE] → [REGION] → [ITU] / [USA] / [CAN] / [IWW]
- 10) Setting a preset squelch : [MENU] → [CH OPE] → [CH SQL SET] → SQL adjustment → [SET]

3. Making a non-distress call via the DSC


When entering a work channel, the equipment would normally suggest it, but also enables to change it manually.


- 1) A routine individual call : [CALL] → Enter the receiver ID → [CALL]

- 2) A routine group call : [MENU] → [CALL] → [EDIT] → [CALL TYPE] → Select RTN/GROUP/RT
→ Enter the group ID → [CALL]
- 3) Semi/auto (PSTN) call : [MENU] → [CALL] → [EDIT] → [CALL TYPE] → Select RTN/PSTN/RT
→ Enter the coast station ID → [EDIT] → [TEL NO]
→ Enter the TEL number → [CALL]
- 4) A safety call to all ships : [MENU] → [CALL] → [EDIT] → [CALL TYPE] → Select SAF/All/RT
→ [CALL]
- 5) A safety call to an individual station : [MENU] → [CALL] → [EDIT] → [CALL TYPE] → Select SAF/INDV/RT
→ Enter the receiver ID → [CALL]
- 6) An urgency call to all ships : [MENU] → [CALL] → [EDIT] → [CALL TYPE] → Select URG/ALL/RT
→ [CALL]
- 7) An urgency call to an individual station : [MENU] → [CALL] → [EDIT] → [CALL TYPE] → Select URG/INDV/RT
→ Enter the receiver ID → [CALL]
- 8) An individual call from the AIS information : [MENU] → [AIS INFO] → [SHIPS LIST] → Select a station from ships list.
→ Select the category. → After that, follow the menu display.

4. Making a distress alert via the DSC

When in distress, make use of the dedicated red **DISTRESS** button to send a distress alert.

 **CAUTION**



- DO NOT test the distress alert.
- When sending the distress alert, follow the instructions of the captain or the officer in charge.
- If a false distress alert is transmitted accidentally, touch [CANCEL] button and transmit the distress cancel following the appeared dialogue screen. And then report the false distress alert to a nearby RCC (Rescue Coordination Center/ in Japan, inform the nearest Japan Coast Guard) referring the guidance displayed on the screen.

Information to be reported:
Ship's name, type, nationality, and ID number, the date/time, location and reason why the false distress alert was transmitted. Also the unit model name and manufacture number/date, if possible.

- Quick distress alert : To send the distress alert quickly, press **DISTRESS** button for 3 seconds. After receiving the acknowledgement, lift the handset and follow this procedure. "MAYDAY"/ "this is"/ the own ship's ID (MMSI)/ ship's position/ the nature of distress/ a rescue request and any other useful information.
- Distress alert after editing : If time permits, send the distress alert after editing the message as follows: Touch [DIST-E] button to open the Edit menu and enter NATURE (distress type) and position and time as needed. Then, without closing that menu, press **DISTRESS** button for 3 seconds. (The subsequent procedure is as with mentioned above.)

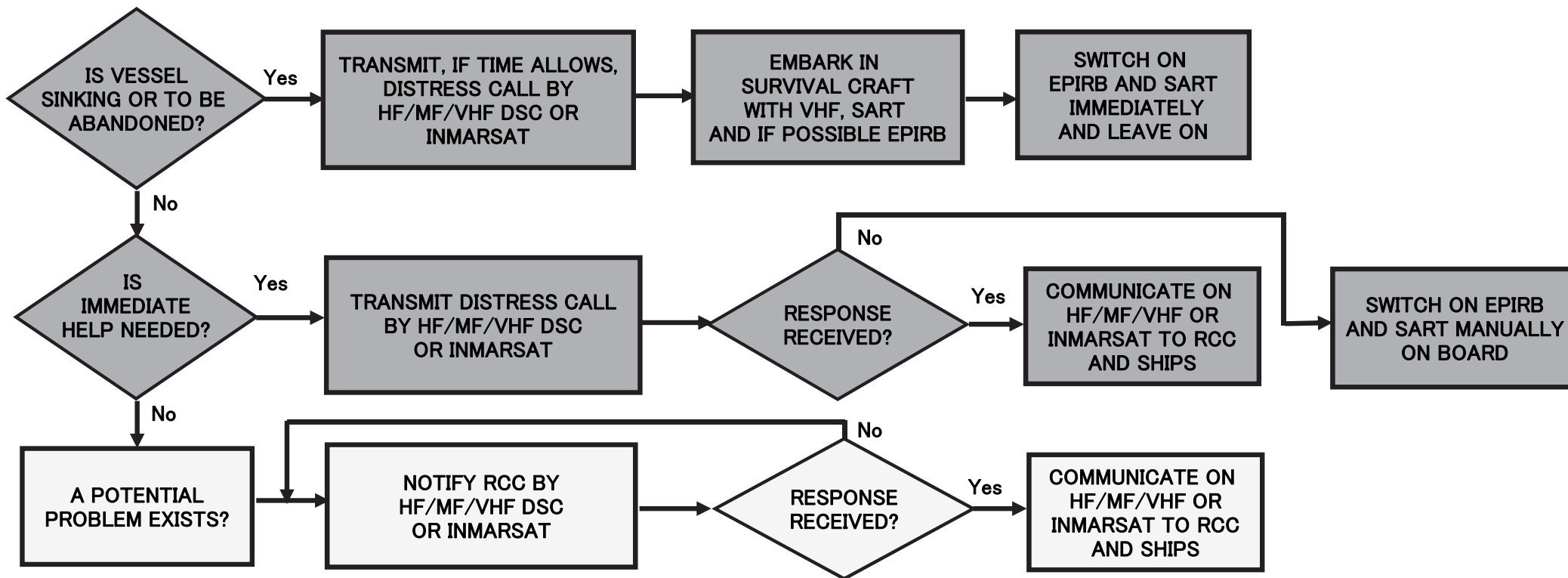
5. Silencing a receiving alert sound of the distress/urgency DSC message

When receiving a distress alert or an urgency call, the receiving alert will basically continue to sound unless silenced manually. To silence the alert sound, touch [CLOSE] button to close the new BAM alert information screen and then [STOP] button on the DSC reception screen. After that, handle the message according to that content.

6. Maintenance

- 1) Self diagnosis of the transceiver : [MENU] → [SELF DIAG] → [TRX] → Select a test target → [EXE]
- 2) Self diagnosis of the controller : [MENU] → [SELF DIAG] → [OWN CTRL] → Select a test target → [EXE]
- 3) Checking the "loop test" only : [MENU] → [SELF DIAG] → [DSC LOOP] → [EXE]
- 4) DSC safety test call : [MENU] → [TEST CALL] → Enter the receiver ID → [CALL]

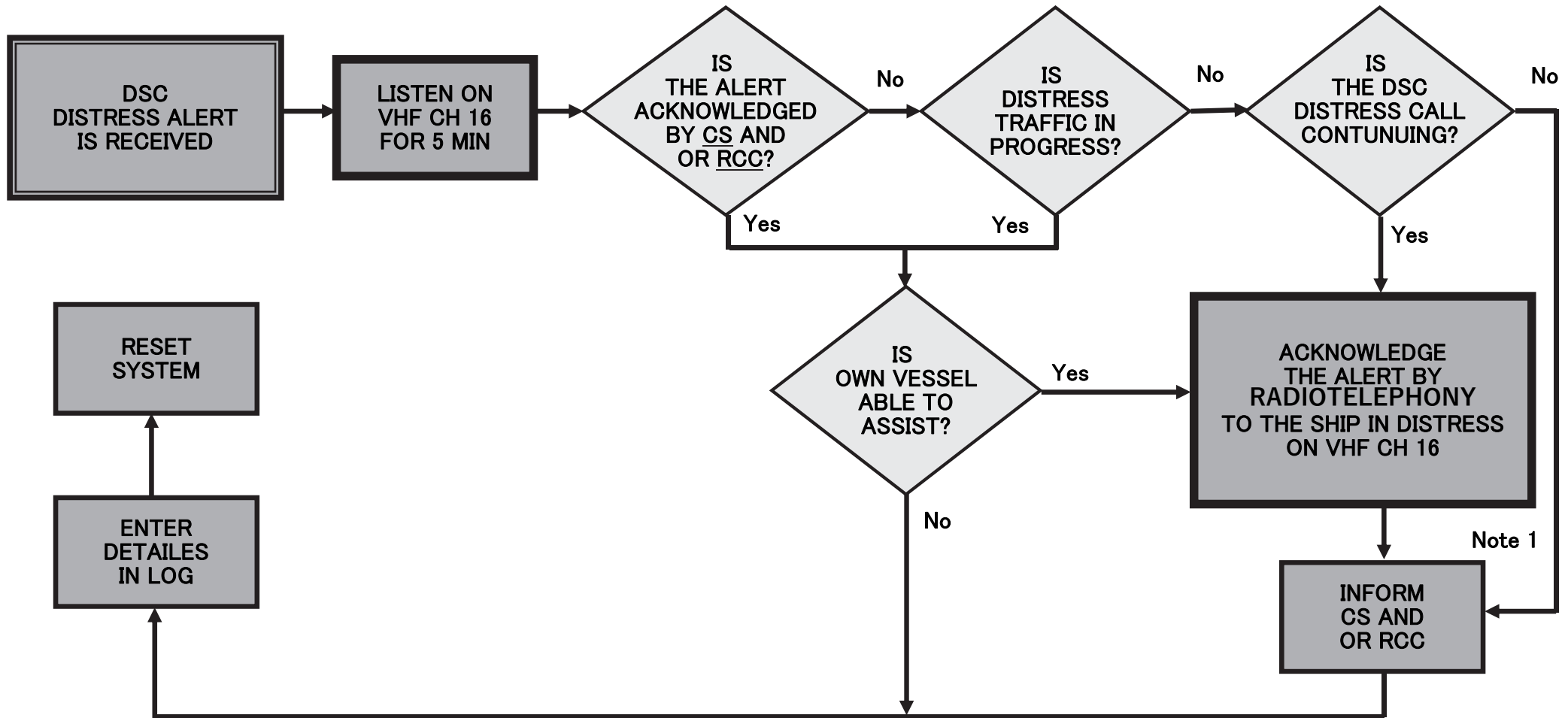
GMDSS OPERATING GUIDANCE FOR MASTERS OF SHIPS IN DISTRESS SITUATIONS



1. EPIRB should float free and activate automatically if it cannot be taken into survival craft.
2. Where necessary, ships should use any appropriate means to alert other ships.
3. Nothing above is intended to preclude the use of any and all available means of distress alerting.

RADIO DISTRESS COMMUNICATIONS			
	DIGITAL SELECTIVE CALLING (DSC)	RADIOTELEPHONE	RADIOTELEX
VHF	CHANNEL 70	CHANNEL 16	
MF	2187.5 kHz	2182.0 kHz	2174.5 kHz
HF4	4207.5 kHz	4125.0 kHz	4177.5 kHz
HF6	6312.0 kHz	6215.0 kHz	6268.0 kHz
HF8	8414.5 kHz	8291.0 kHz	8376.5 kHz
HF12	12577.0 kHz	12290.0 kHz	12520.0 kHz
HF16	16804.5 kHz	16420.0 kHz	16695.0 kHz

ACTIONS BY SHIPS UPON RECEPTION OF VHF DSC DISTRESS ALERT



REMARKS:

Note1 : Appropriate or relevant RCC and/or Coast Station shall be informed accordingly. If further DSC alerts are received from the same source and the ship in distress is beyond doubt in the vicinity, a DSC acknowledgement may, after consultation with an RCC or Coast Station, be sent to terminate the call.

Note2 : In no case is a ship permitted to transmit a DSC distress relay call on receipt of a DSC distress alert on VHF channel 70.

CS = Coast Station

RCC = Rescue Co-ordination Center

国際VHF無線電話装置
Marine VHF Radiotelephone
Model JHS-800S



注意



- 遭難時以外の遭難警報の送信は禁止されています。
- 遭難警報の送信は、本船の責任者の判断により実施してください。
- 遭難警報を受信した場合は、本船の責任者に通報してください。
- 誤って遭難警報を送信した場合、CANCELボタンにより遭難警報のキャンセル送信を行ってください。その後、誤送信したことを救助調整本部 (RCC、日本の場合は最寄りの海上保安部署) に画面の案内に従って以下の事項を通報します。
 船名、船種、船籍、ID番号、誤発射及び停止した位置とその時刻、誤発射の原因、できれば装置の型式、製造番号、製造年月



CAUTION



- DO NOT transmit distress alert except for distress situation.
- Distress alert must be under the instruction of person in charge.
- If a distress alert is received, inform the person in charge.
- If a false distress alert is transmitted accidentally, touch the CANCEL button and transmit the distress cancel referring the guidances displayed on the screen.
 And then report the false distress alert to a nearby RCC (Rescue Coordination Center/ in Japan, inform the nearest Japan Coast Guard.) Information to be reported:
 Ship's name, type, nationality, and ID number, the date/time, location and reason why the false distress alert was transmitted.
 Also the unit model name and manufacture number/date, if possible.

この警告ラベルは国際VHF無線電話装置の近くの見やすい場所に貼り付けてください。

Stick this label on clearly visible surface at in the vicinity of marine VHF radiotelephone.

JRC 日本無線株式会社

JRC *Japan Radio Co., Ltd.*